



# GAT MONTHLY MEMBERSHIP PROGRESS REPORT

Results as of: 1/31/2023

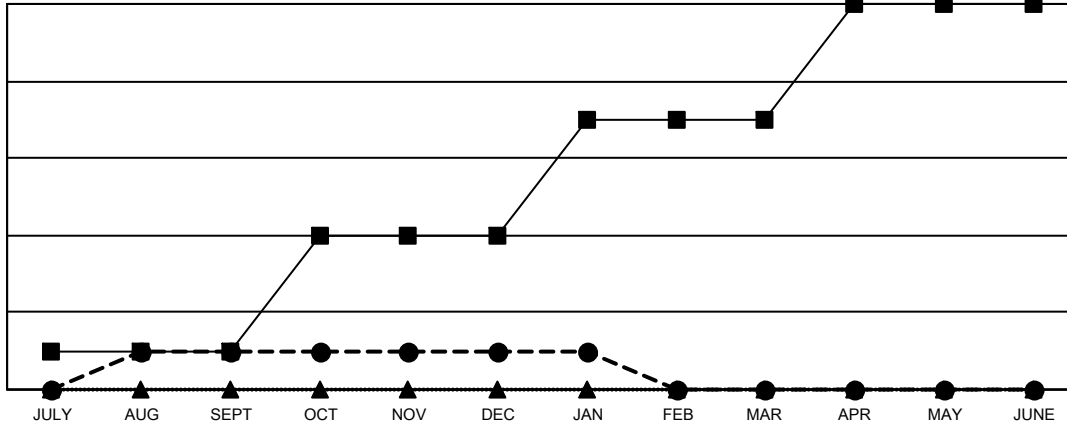
Multiple District 33

LOCATION: MASSACHUSETTS

Clubs			
RESULTS FOR 2022-2023			
QUARTER	NEW CLUB GOAL	NEW CLUBS	DROPPED CLUBS
JULY/AUG/SEPT	1	1	0
OCT/NOV/DEC	3	0	3
JAN/FEB/MAR	3	0	0
APR/MAY/JUNE	3	0	0

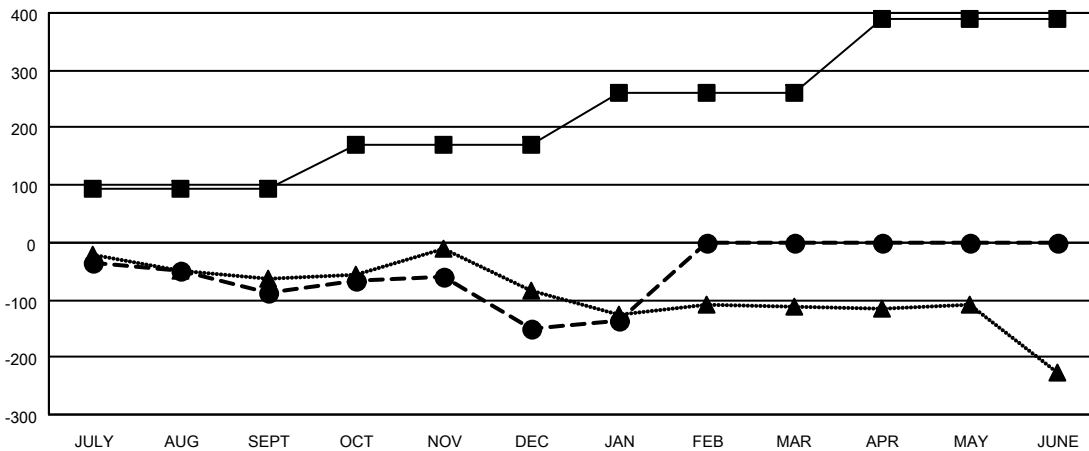
Members			
RESULTS FOR 2022-2023			
QUARTER	MEMBER GROWTH NET GOAL	MEMBER GROWTH ACTUAL	DROPPED MEMBERS ACTUAL (including transfers)
JULY/AUG/SEPT	95	97	175
OCT/NOV/DEC	75	161	211
JAN/FEB/MAR	90	52	32
APR/MAY/JUNE	130	0	0

GOALS AND ACTUAL NEW CLUBS CUMULATIVE



- CURRENT YEAR GOALS FOR NEW CLUBS
- CURRENT YEAR ACTUAL NEW CLUBS
- ▲- LAST YEAR ACTUAL NEW CLUBS

GOALS AND ACTUAL MEMBERS CUMULATIVE



- MEMBER GROWTH NET GOAL
- MEMBER GROWTH ACTUAL
- ▲- LAST YEAR MEMBERSHIP ACTUAL

DROPPED CLUBS: 3	
<b>DROPPED MEMBERS</b>	
DECEASED	50
CLUB CANCELLED	41
OTHER	327
<b>TOTAL</b>	<b>418</b>

98 CLUBS OF 214 ADDED 1 OR MORE NEW MEMBERS

[CLICK HERE FOR CUMULATIVE MEMBERSHIP DATA](#)

GENDER DISTRIBUTION	
MALE	3,888 (62.49%)
FEMALE	2,332 (37.48%)
NON BINARY	0 (0.00%)
PREFER NOT TO ANSWER	2 (0.03%)
<b>TOTAL FAMILY UNIT MEMBERS</b>	<b>1,056</b>
FAMILY MEMBERS PAYING HALF DUES	537